

IRON and STEEL Foundry Refractory Foundry Division

insertec
Hornos y Refractarios

Iron and Steel Foundry – En



Induction Furnace



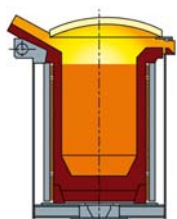
Cuppola



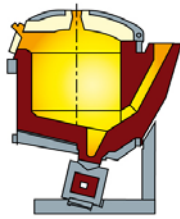
Rotary Furnace



Ladles



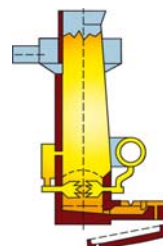
Induction



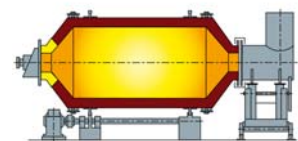
Channel Furnace



Pouring Unit



Cuppola



Rotary

INSERTEC produces a wide range of refractory masses and precast shapes for the Iron and Steel Industry.

INSERTEC has an own Quartzite mine, were is taken high quality mineral.

Refractory Masses

INSERTEC has a wide range of products to be in contact with the iron and the steel with the following characteristics:

- High Mechanical Strength
- Resistance to the Abrasion
- Resistance to the Erosion
- Resistance to the Chemical Attacks

- **CUARSIL**
- **INSETAG**
- **INSELOC**
- **BERELOC**
- **ULTRALOC**
- **INSECOR**
- **INSEMAG**
- **FASTON**

Applications

- Induction Furnace
- Cuppola
- Rotary Furnace
- Transport and Pouring Ladles
- Channel Furnaces
- Automatic Pouring Units, with and without inductor.

In addition to these products, **INSERTEC** produced materials for insulation and for reparations

- **INSEGUN**
- **INSEPLAST**
- **CERAMIC FIBERS**
- **INSULATING SHEETS**
- **PAINTS**
- **BRICKS**



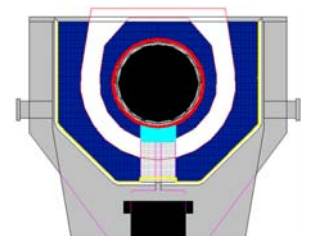
Quartzite Mine

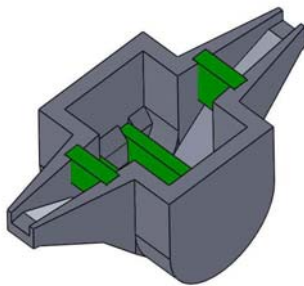


Channel Furnace

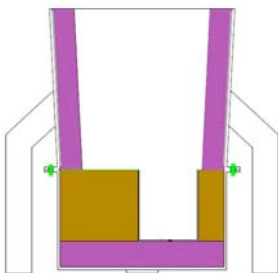


Inductor





Ladle Design



CIF Pan



Bottom and Wall Vibrators

INSERTEC, with the continuous changes in the refractory industry, INSERTEC has the capacity to adapt the refractory solutions to the customer requests giving to the customer a complete service, such as:

- Design and fabrication of transport and maintenance elements.
- Drying Equipment.
- Maintenance and Installation People.
- Technical Supervision.
- Courses for workers of our customers.

PRECAST SHAPES

INSERTEC has on it:

- A Technical office looking forward individual solutions adapted for each customer.
- Laboratory were are developing new products.

INSERTEC has on disposal for our customers Porous Plugs for Coreless Induction Furnaces melting Steel.

Advantages

- Better slag removal
- Inclusions elimination
- Gas content reduction
- Improvement in the final pieces quality
- Homogeneization of the Temperature and melting composition
- Reduce of the porosity in the pieces
- Makes easier the distribution of agents.

INSERTEC supplies and repairs wall and bottom vibrators with the following advantages:

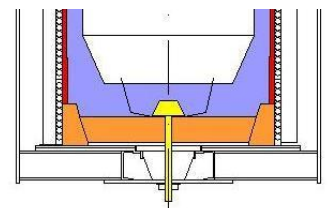
- Friendly environment, generating less powder
- Safe and economical installation
- Optimization of the packaging density
- Consistent Installation
- Lining long life
- Time safe



Ladle Repair



Fixing Pieces



Porous Plugs



Nozzles and Stoppers

