

ALUSWIRLER®

www.insertec.biz

Melting Chips Process



\ Chips dosing to the ALUSWIRLER®

The ALUSWIRLER® system is designed for continuous melting of aluminium chips, by submersion in a hot molten metal vortex.

The ALUSWIRLER® is the hearth of the system. The aluminium chips are melted because their submersion into the liquid metal and the quick heat transfer from the hot molten metal. The vortex is generated by a mechanical pump electrically driven.

The ALUSWIRLER® chamber is a side well attached to the main furnace chamber, linked by communication channels, which direct the flow of molten metal generated by the mechanical pump.

The impeller, its housing and the vortex chamber are ceramic pre-cast shapes, easily replaceable. They are located into the refractory lining of the side well, becoming so the ALUSWIRLER® chamber.

The impeller rotation produces a high flow of molten metal, that downwards becomes a vortex of hot liquid metal, point where the pretreated and dried aluminium chips are charged for its melting, being submerged nearly instantaneously. The melting process is so quick that all the chips are melted before they can reach the main furnace chamber.

Features of the ALUSWIRLER® system:

- . High metal recovery
- . Low specific energy consumption
- . Continuous melting in molten metal
- . Applied sink vortex technology
- . Low residence time
- . Indirect heating
- . Molten metal temperature uniformity
- . Not salts required



\ Molten metal vortex

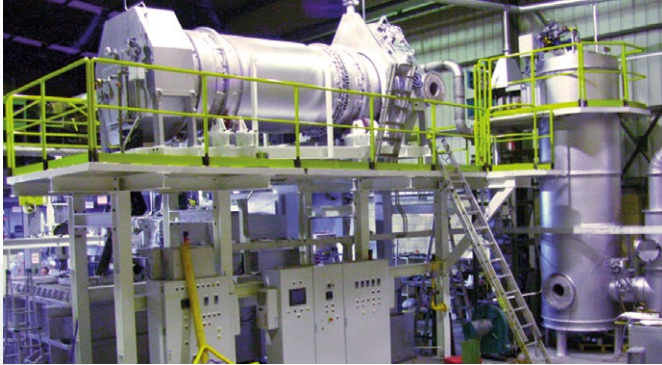
WHERE ENGINEERING BECOMES HEAT

insertec 
Furnaces & Refractories

ALUSWIRLER®

Melting Chips Process

www.insertec.biz



\ Rotary dryer 1000 kg/hr



\ Chip Pretreatment - Crushing & centrifuge

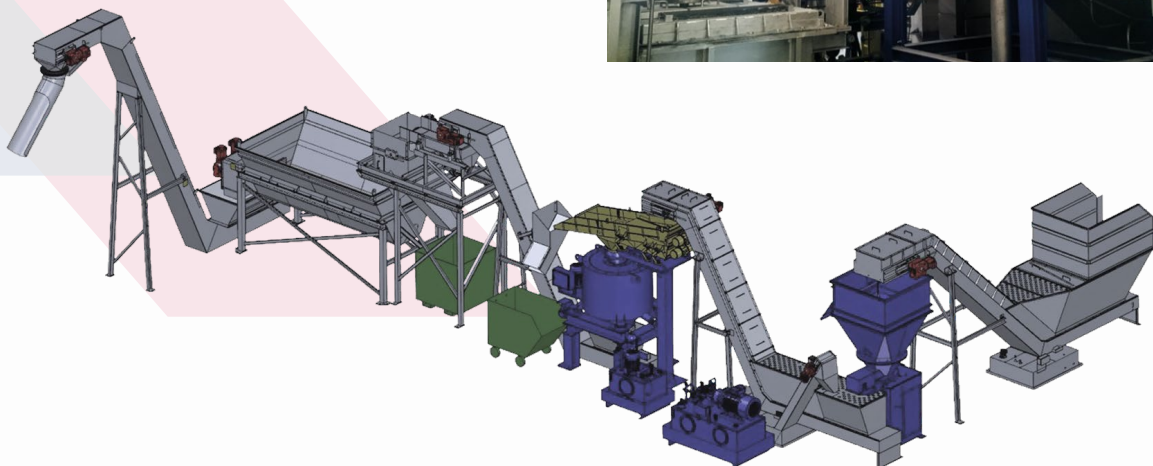
Chips pretreatment:

The treatment in continuous of the chips previous to the melting process requires:

- . Rotary Shredder, to obtain uniform chips, size between 10-30 mm.
- . Centrifugal Separator, to minimize lubricants and water content, up to 3-5%.
- . Magnetic Separator, to eliminate the ferrous parts accompanying the chips.
- . Buffer Hopper of treated chips, previous the drying and melting process.
- . Related belt and screw conveyors, between the different components, with variable adjusted speed.
- . Rotary Dryer, for complete evaporation of lubricants and water, supplying hot chips ready to be melted.

In-house Chips Recycling in the Foundry

- . Avoid the storage of chips for resale.
- . Additional melting capacity.
- . Improvement of the Environmental issues.
- . Compact installation and quick pay-back.



Basket \ elevator \ shredder \ centrifuge \ separator \ buffer hopper rotary dryer

Etzerre Kaminoa 21 \
48970 Basauri \ Bizkaia \ Spain

Tel.: +34 - 944 409 420 (Furnaces)
+34 - 944 409 450 (Refractories)

insertec@insertec.biz

insertec 
Furnaces & Refractories